



Security+Plus®

ELITE®  
PROTECTION  
PROGRAMDIAMOND CARE  
PROTECTION PLAN®

QualityGuard+Plus®

# 360Shield™ Product Information

## 81214 DOWC | 360Shield Ceramic Coating Complete Body Protection (RTU)

### Description

360Shield Ceramic Coating Complete Body Protection (Ready To Use) was created to provide unprecedented protection to all automotive exterior surfaces.

### Key Points

- Banana odor product
- Ready to use
- Spray on rinse off or chamois dry
- Fluorescent green yellow
- Quick and easy

### Benefits

- UV blocker
- Automotive body protection
- Glass protection
- Chrome protection
- Plastic molding protection
- Rubber trim protection
- Exceptional durability
- Hydrophobic finish
- Super shine enhancement
- Utilizes the latest in nano chemistry to create a highly durable protective coating
- Allows protection to take place on surfaces unprotected by traditional paint sealants

### Labor time

5 minutes

### Packaging

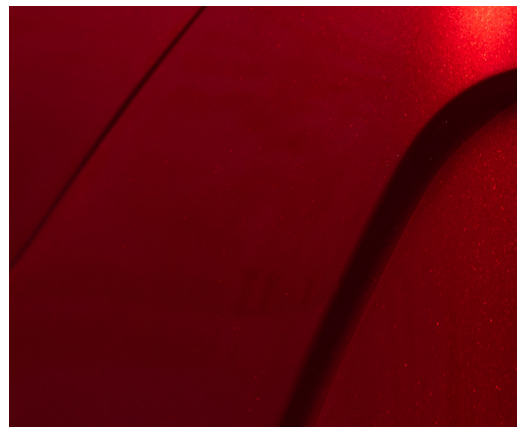
1-Gallon

### How to use

1. Spray product on entire vehicle using a regular spray bottle.
2. Rinse vehicle or chamois dry.
3. Once the vehicle is rinsed, dry thoroughly.

### For Best Results

Immediately chamois dry the vehicle to further embed the nanoparticles and leave the surface streak free.



# 360Shield™ Product Information

## 81607 DOWC | 360Shield Fabric Protectant

### Description

360Shield is a specially formulated water-based fabric treatment designed to impart stain resistant and soil retarding characteristics.

### Key Points

- Ready to use
- Soil retarding
- Stain resistant
- Clear color

### Benefits

- Less effort because it is ready to use
- Easy to apply

### Labor time

5 minutes

### Packaging

1-Gallon treats 20 vehicles

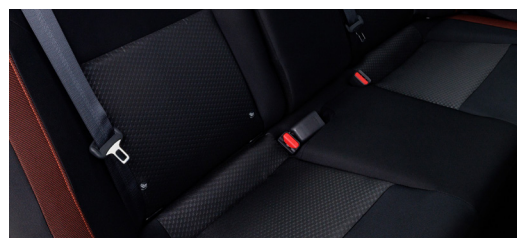
### How to use

Use only with adequate ventilation.  
**Do not smoke during application.**

1. Using a mist trigger sprayer or a pressure sprayer apply in two directions using a 90 degree cross pattern followed by raking for carpet and brushing for upholstery fabric.
2. Drying time is 3 to 5 hours.  
Use adequate air motion or ventilation during drying time.

### For Best Results

- Always use adequate ventilation.
- Make sure carpets and upholstery is clean before applying product.
- Consult your Safety Data Sheet for details on safe handling and use procedures.



# 360Shield™ Product Information

## 81911 DOWC | 360Shield Leather & Vinyl Preserver

### Description

360Shield a deep penetrating conditioner and preserver for maximum protection against spills and fading due to the sun's harmful rays. For professional use only.

### Key Points

- Ready to use
- White cream color

### Benefits

- Quickly restores and beautifies all leather and vinyl surfaces.
- Saves time and minimizes waste because it is ready to use.

### Labor time

10 minutes

### Packaging

1-Gallon treats 20 vehicles

### How to use

Use only with adequate ventilation.  
**Do not smoke during application.**

1. Shake container well before using product.
2. Apply sparingly using a soft, clean cloth or applicator ensuring that the product is spread over the entire surface.
3. Allow to dry for several minutes.

### For Best Results

- Always apply to clean dry surface.
- Use the Leather & Vinyl Cleaner first to pre-clean leather surfaces of unwanted dirt and grime. Safe for all leather and vinyl surfaces.
- Consult your Safety Data Sheet for safe use and handling procedures.





Security+Plus®



ELITE®  
PROTECTION  
PROGRAM



DIAMOND CARE  
PROTECTION PLAN®

QualityGuard+Plus®

# 360Shield™ Product Information

## UV Anti-Theft Label Installation Instructions

---

1. Identify the locations to be marked.  
**Suggested:** fenders (2), hood (1), doors (2/4), quarter panels (2), truck lid (1).
2. Apply to a painted metal surface, before applying; make sure the area is clean, oil and wax free. It is recommended that isopropyl alcohol be used as a cleaning agent.
3. Gently peel the label from the backing. Apply the label to the area to be marked. Gently press the label to remove any wrinkles or air bubbles, and then press firmly to completely affix.
4. Repeat these steps for each label to be affixed.
5. The indelible UV ink will embed itself into the painted surface.
6. Do not remove the labels; they should remain affixed to the vehicle.

